

**Chautauqua County Youth Hockey Association, Inc.**



**P.O. Box 266, Jamestown, New York 14702**

**[www.JamestownLakers.com](http://www.JamestownLakers.com)**

**INFORMATION  
& POLICY  
GUIDEBOOK**

***Adopted by the CCYHA Board of Directors - April 2010.***

# TABLE OF CONTENTS

## **Contents**

TABLE OF CONTENTS.....	2
INTRODUCTION .....	3
BOARD OF DIRECTORS & OFFICERS.....	4
BACKGROUND AND GOALS.....	6
MEMBERSHIP.....	7
TEAM AND PLAYER CLASSIFICATION.....	8
TRAVEL HOCKEY EXPERIENCE.....	9
TRAVEL TEAM TRY OUT POLICY.....	10
PLAYER MOVEMENT.....	11
HIGH SCHOOL HOCKEY PROGRAM .....	12
FALL SEASON SPORTS .....	13
KEEP IT IN JAMESTOWN HOUSE LEAGUE.....	14
EQUIPMENT REQUIREMENTS.....	15
REGISTRATION PROCEDURE.....	16
SCHOLARSHIPS.....	17
FUNDRAISING.....	18
TOURNAMENTS .....	19
RETURNED CHECKS.....	20
TEAM VOLUNTEERS.....	21
PLAYER RULES & CONDUCT.....	22
PARENT CONDUCT.....	23
ADDITIONAL RULES.....	24
GRIEVANCE PROCEDURE.....	25

## **INTRODUCTION**

Welcome to the Chautauqua County Youth Hockey Association! If you are new to our organization, or have put many children through our program, we are sure this booklet will serve you well. You will find explanations, rules, policies, and general information about the Chautauqua County Youth Hockey Association that apply to our players, coaches, volunteers, parents and fans of the game. The CCYHA Board of Directors (Officers) reserves the right to change, or amend the policies, and rules of the organization by majority vote at any regular or special meeting of the Board of Directors. These changes will be made public to the membership by mass email, website or bulletin board posting.

For further clarification of these policies you should contact a CCYHA board member.

# **BOARD OF DIRECTORS & OFFICERS**

The CCYHA Board of Directors is primarily made up of elected, un-paid volunteers. Additional sub-committees or short-term work groups may be formed as needed. A full description of the areas of responsibility for each Board position is listed in the Association By-Laws, which are available at the website. If you require a hard copy, this can be obtained by contacting a Board Member. Board members serve two-year terms, and are elected by membership vote at each CCYHA Annual Meeting. Except Directors at Large are appointed by the President and serve one-year terms.

## **ELECTION PROCEDURE**

**Nominations:** One month before the Annual meeting the Secretary shall post a sign-up sheet on the C.C.Y.H.A. Bulletin Board at the Jamestown Ice Arena. This sheet shall indicate those positions up for election at the Annual Meeting. Those members interested in running for an elected office shall clearly indicate their name, and will be required to submit an application to the President in a timely matter.

**Method of Election:** Officers and members of the Board of Directors shall be elected by a majority vote of those members present at the Annual Board meeting. The members present at the election meeting shall constitute a majority.

The CCYHA President may appoint individuals to serve special functions on the Board per a majority vote from the Board of Directors. Additionally the CCYHA President may at his/her discretion compensate an appointed officer of the Corporation upon majority vote of the CCYHA Board of Directors.

The Board of Directors and a number of different committees carry out the Association's activities. All activities are governed by the Association's bylaws.

## **The CCYHA Board of Directors is comprised of the following positions**

- \* **PRESIDENT** (2 year elected official)
- \* **VICE PRESIDENT OF TRAVEL** (2 year elected official)
- \* **HOUSE LEAGUE COORDINATOR** (2 year elected official)
- \* **TREASURER** (2 year elected official)
- \* **REGISTRAR** (2 year elected official)
- \* **SECRETARY** (2 year elected official)
- \* **COACHES (ACE) COORDINATOR** (2 year elected official)
- \* **TOURNAMENT DIRECTOR** (1 year appointed official)
- \* **ICE-TIME COORDINATOR** (1 year appointed official)
- \* **DIRECTORS AT LARGE** (Up to 4 per year, 1 year appointed)
- \* **ADVISOR** (Immediate past President)

**Board members receive no preferential treatment of any kind by serving on the Board.**

Those willing to run for an elected position must be in "good standing", and are subject to review by the CCYHA Board of Directors. Voting procedures may be found in the CCYHA By-Laws.

The CCYHA Board of Directors meets on the third Wednesday of each month at 6:30 P.M. at the Jamestown Savings Bank Ice Arena, or at a place to be decided by the CCYHA Board of Directors. Monthly board meetings are open to the general membership.

The Board of Directors reserves the right to hold “closed door” meetings and hold “Executive Session” meetings which are closed to the public. Upcoming Meeting Agendas as well as past meeting minutes are available at the [www. Jamestownlakers.com](http://www.Jamestownlakers.com) website. Any postponements of meetings will be announced on the website.

EACH TRAVEL TEAM must be represented at EACH regular CCYHA Board Meeting. Failure to do so will result in that team losing a practice ice session, which will then be given to a team of the CCYHA Board of Directors choice. It is the travel team manager’s responsibility to be sure someone attends each meeting. Those serving on the CCYHA Board of Directors will be acceptable as representing the team.

## **BACKGROUND AND GOALS**

The CCYHA “unofficially” began in 1966 through the efforts of parents, teachers, business people, players and the “father” of CCYHA - John Alm. Alm built an ice rink in his barn at Driftwood which served as the home of hockey until CCYHA called Allen Park Ice Rink its home. The CCYHA officially took not-for-profit status in 1975, and has provided area children the opportunity to learn how to play, understand, and enjoy the game of ice hockey ever since. We now play in the state-of-the-art Jamestown Savings Bank Ice Arena, at 319 West 3<sup>rd</sup> Street in downtown Jamestown, NY.

**MISSION STATEMENT:** The purpose for which the Chautauqua County Youth Hockey Association, Inc. was incorporated is ... to instruct and train the youth of Chautauqua County and surrounding areas in the skills associated with the game of ice hockey, as well as the ideals of good sportsmanship, fair play, and respect for their fellow skaters, coaches, referees, volunteers and fans of the game.

## **MEMBERSHIP**

Membership of parents & legal guardians in the CCYHA is automatic with the registration of a player. Two parents/legal guardians of each registered player can be "voting members" of the CCYHA. All Officers, League Directors, Managers, Coaches, and Officials appointed by the Board may also become voting members of the CCYHA. Membership in the CCYHA corresponds to the term of registration and automatically terminates upon; withdrawal from the program, failure to re-register or be re-appointed. Association members have the opportunity to nominate and elect people to the Board of Directors at the Annual Meeting. In the event there is an open position on the Board of Directors resulting from a Board Member's termination or resignation prior to the completion of his/her term of office, the President may appoint a CCYHA member to finish the remainder of the term, subject to approval by majority vote of the remaining Board members at the next regularly scheduled meeting.

If you currently skate with another organization, and would like to skate for the CCYHA, you must obtain a release from the hockey association where you reside to be eligible to try-out for our travel teams, or play in our house league. Players wishing to leave the CCYHA to play for another organization must also obtain a release from the CCYHA President. Account Balances must be paid in full to receive a release.

# **TEAM AND PLAYER CLASSIFICATION**

## ***Association Classification:***

The CCYHA is a registered member of USA HOCKEY, the New York State Amateur Hockey Association (NYSAHA), Western New York Amateur Hockey League (WNYAHL) and Great Lakes Girls Hockey League (GLGHL). The organization is classified as a Tier III (or C Center).

## ***Team Classification:***

The number of travel teams the CCYHA declares may change on a year to year basis, based on registration numbers and players' abilities, and remains solely in the discretion of the Board of Directors. The Tournament Bound Teams consist of better skilled players that participate in more competitive WNYAHL divisions and try to qualify for the end of season New York State Championship Tournament. The Non-tournament Bound teams consist of the average players who participate in the WNYAHL league. These teams primarily compete for league championships. House league information can be found later in this booklet.

## ***Player Classification:***

Travel players are placed in age divisions based on their birth year, per USA Hockey.

<b>18 Years</b>	<b>Midget 18 &amp; Under</b>
<b>17 Years</b>	
<b>16 Years</b>	<b>Midget 16 &amp; Under</b>
<b>15 Years</b>	
<b>14 Years</b>	<b>Bantam 14 or Under</b>
<b>13 Years</b>	
<b>12 Years</b>	<b>Pee Wee 12 or Under</b>
<b>11 Years</b>	
<b>10 Years</b>	<b>Squirt 10 or Under</b>
<b>9 Years</b>	
<b>8 Years</b>	<b>Mite 8 or Under</b>

The CCYHA may also field all-girl hockey team(s), depending on registration numbers.

# **TRAVEL HOCKEY EXPERIENCE**

The C.C.Y.H.A. is a member of the Western New York Amateur Hockey League (WNYAHL), which includes other regional associations from the greater Buffalo region, and outskirt regions such as Monroe County, Rochester, Webster and Erie, PA.

Official practices begin in August/September of each year, with a competitive home, and away game schedule being played from October through March. The season may include participation in the CCYHA Mid-Winter Classic Invitational, away hockey tournaments and end of season playoffs, which decide league championships.

The C.C.Y.H.A. Board of Directors has the philosophy of dividing players according to skill level. This method of division is intended to develop both the average and exceptional player at a much faster rate. Players will participate in try-outs each year to determine team rosters. The Tournament Bound teams consist of better skilled players that participate in more competitive divisions and try to qualify for the end of season New York State Championship Tournament. The Non-tournament Bound teams consist of the average players who participate in the WNYAHL league. These teams primarily compete for league championships, and often times compete in invitational tournaments.

It is important to consider the following when trying out for or playing on a travel team:

- Financial Considerations

- An additional CCYHA registration fee will be added to cover added ice time for games.
- Costs associated with additional traveling (ex. fuel, meals, etc.)
- Additional Tournament entry fees and related costs, which are the responsibility of the team. Any tournament fundraising activities must be approved by the CCYHA Board.

- Commitment

- Playing time will favor those players who hustle and give 100% to the effort of playing the game as well as practice. Of course, skill level will to some degree dictate the amount of playing time a player receives, however this can vary by coaching philosophy.
- Traveling (usually every weekend)
- Participation in tournaments may necessitate an overnight stay due to longer distances traveled and the intensity of the game schedule.

The amount of exhibition travel involved and tournament participation is generally determined by a team, but may be reviewed by the CCYHA Board of Directors.

# **TRAVEL TEAM TRY OUT POLICY**

## ***Player Eligibility:***

- Any player who is properly registered with CCYHA, and is current with all registration and travel tryout fees is eligible to try out for the travel team at the player's age appropriate level.
- Tryout Fees will be required to be paid in full before any participant tries out.
- Players who make a Travel team are not automatically granted a guaranteed set amount of playing time during games. Playing time is at the discretion of the teams coaching staff. However, coaches are encouraged to give every player ample playing time (including goalies).

## ***Player Selection Process***

The Head Coach and his/her selected assistant coach(s) (minimum of 3) of the Travel team shall make the selection of players for all CCYHA travel teams. The Head Coach shall use a player rating system that has been developed by the Coaching Coordinator and approved by the Board of Directors. The Head Coach and assistant coach(s) shall meet immediately after the last tryout session for the team to compare the respective ratings for each player. In general, the results of the player tryout ratings shall be used to select the players for the travel teams, with leeway given to the Head Coach and asst. coach(s) for decisions to fill rosters. The rating process and travel team player list shall be documented by the Head Coach and given to the Coaches Coordinator within 24 hours of the last try-out session. Proposed final rosters shall be presented to the Board of Directors by the Coaches Coordinator. The Board of Directors must approve all rosters and upon such approval The Board shall post the rosters on the CCYHA bulletin board at the Jamestown Savings Bank Ice Arena and on the website..

## ***Team Size and Number of Teams:***

The number of players to be selected to a travel team varies by the following factors: the minimum quantity of players necessary to field a competitive travel team and the number and level of skill of the pool of players who decide to try out for a given team. The maximum and the minimum number of players on a team shall be determined by the Board of Directors.

When there are more goalies trying out than there are teams to play on, the top team's head coach in conjunction with the CCYHA Coaches Coordinator will have the choice to carry more than one goalie.

## PLAYER MOVEMENT

The CCYHA philosophy of player development is that it is best for all players to play within their respective age group, therefore individual requests to try-out for a team above their age classification will not be considered by the CCYHA Board of Directors unless it is made in an effort to achieve *and* balance team population, or, a player demonstrates exceptional skills and by playing up they will have the opportunity to compete at a level that is appropriate for their skill level. Any such requests must be made in writing to the Board of Directors with 14 days prior to **registration** for travel try-outs for the upcoming season. The decision to allow a player to try out above his/her age classification rests solely in the discretion of the Board. Such Board decisions will be made in conjunction with and on the recommendation of coaches, with parents' approval. The CCYHA Board of Directors is responsible for the success of the entire organization, and if requests to try-out above a player's age classification are deemed detrimental to the organization based on the number of participants and teams, the Board holds the right to deny any and all requests. If a player is approved to "try-out up", the player must also try-out for his/her age appropriate level. In the event a player tries-out for a tournament bound team above the player's age classification and does not make the tournament bound team, the player may not play on the non-tournament bound team, unless approved by the Board of Directors.

## **HIGH SCHOOL HOCKEY PROGRAM**

At this level you must be an experienced skater with prior organized hockey experience to participate. The High School Hockey Committee is made up each season of experienced and “younger” members that will focus on the overall interests of the High School Program. This committee structure must be approved each season by the CCYHA Board of Directors. The High School Hockey Committee may suggest to the CCYHA Board of Directors which league they believe the Varsity and Junior Varsity teams shall play in each season. Decisions made by this committee are subject to review by the CCYHA Board of Directors at any regular or special session meeting. Tryouts Guidelines and procedure for this program will be announced to the general membership on the bulletin board or website.

## **FALL SEASON SPORTS**

The CCYHA recognizes that many youth hockey players participate in other sports and extra-curricular activities such as football, soccer, track, etc. The CCYHA recognizes the value of these activities and supports the participation of our players in these endeavors. However, players & parents are subject to being disciplined; meaning, a coach may at their discretion not play a player that has missed a practice/game due to the conflict. If a player's absence is deemed detrimental to the coaching staff, the Head Coach, in conjunction with the coaches' coordinator may remove the player from the roster.

High School Hockey players must be aware that fall sports have a detrimental effect on High School team performances and playing time. Anyone wishing to play a fall sport that is on a High School team may be required to attend extra practices prior to the start of the season, and may not be guaranteed ice time until their conditioning and skill level is adequate to the coaching staff. All High School players are encouraged to attend off-season clinics that will help maintain and improve their skills.

# **CCYHA HOUSE LEAGUE**

The CCYHA Recreational House League was created to give every player the opportunity to play hockey in a recreational atmosphere. The number of age divisions and teams the CCYHA declares may change on a yearly basis, based on registration numbers and players' abilities.

The goals of the House League focus on providing instruction and playing hockey in a developmental environment. All children are offered the same opportunities and are treated similarly regardless of their abilities or the speed at which they learn. While scores are kept and games are won and lost, a strong emphasis is placed on sportsmanship.

With the exception of the Beginner Program, which is described separately below, players are divided into balanced teams and have equal playing time.

Coaches and assistants, typically parents of House League players, are volunteer members of the CCYHA. Sponsors, managers, score keepers and timekeepers are also needed for each team. If you are able to volunteer for any of these roles, please contact the Vice President of the House League. **ALL COACHES, MANAGERS AND ON-ICE PARTICIPANTS MUST BE APPROVED TO THE PROPER COACHING EDUCATION AGE LEVEL BY USA HOCKEY.**

## **House League "Select" Squads**

At times, there is an interest at the house level for a travel experience. Therefore the CCYHA House League Vice President may set up a limited number of travel games to play against neighboring associations (Fredonia, Olean, Erie and sometimes Buffalo). These "select squads" will consist of interested House League players who will pay an additional fee to cover visiting ice time costs. No games will conflict with the pre-existing House league schedules. Organizing a team for away tournaments will be at the discretion of the House League Vice President, and the CCYHA Board of Directors.

## **Beginner Program**

This program introduces the beginning players' initial exposure to skating and hockey. Skill development, teamwork, and fun are emphasized. Pressures to perform, to score, and to win, are eliminated. All first year players (ages 4 -6) will be enrolled in this program. Players who have never skated as well as those who have some skating experience are welcome to participate.

Players will be grouped by ability so that teaching methods can be geared to the correct level. Younger groups will spend time practicing their skating and hockey techniques as well as play skill development games. Older groups will have practice time devoted to fundamentals of position play and will have the opportunity to play games later in the season.

# EQUIPMENT REQUIREMENTS

All CCYHA coaches, assistants, and on-ice helpers are required to wear helmets while on the ice according to USA Hockey rules. Coaches that refuse to wear helmets will not be allowed to participate in on-ice activities, and risk future disciplinary action by the CCYHA Board, and USA Hockey.

All CCYHA travel teams must purchase, and will own, both home, and away jerseys/socks. House League and Beginners jerseys will be provided by CCYHA. Beginners may keep their jerseys at the end of the season, House teams must return them. The CCYHA has standardized uniform colors of Red, White and Black modeled after the Chicago Blackhawks of the NHL. Please keep these colors in mind when purchasing equipment at the travel level, as this will allow our teams to present themselves looking their best. CCYHA asks that all players purchase a black helmet, and black pants. Game socks should all match, and coordinate with home and away uniforms.

Each skater **MUST WEAR** the following equipment when participating in games or practices.

- Hockey skates
- Black USA Hockey approved protective helmet with full-face protection.
- Ice hockey sticks with wooden blade
- Neck / Throat protector. *(Bantam age player and above are not required to wear a Neck/Throat protector, however the head coach reserves the right to make this rule mandatory for all of his/her players. Neck/Throat protectors are MANDATORY for all house league players, regardless of skill or experience level.*
- Hockey elbow pads
- Hockey gloves
- Hockey shin pads
- Hockey shoulder pads
- Black hockey pants.
- Internal colored mouth guard that attaches to helmet.
- Garter belt (optional, tape and straps may be used)
- Protective cup / supporter
- Practice jersey
- Home and away Lakers jerseys.

Each team manager will coordinate with the CCYHA Equipment Manager and parents regarding jerseys orders before the season. The cost of the jerseys is the responsibility of the family for the Pee-Wee and above levels. All jerseys must be ordered through the same company for matching purposes. Separate orders often times result in different lettering, or shades of color. CCYHA does not encourage Lakers jerseys to be used for practice to keep them looking great for games, and to help with longevity— a separate practice jersey is required. In the event two players share the same uniform number when joining a team, the older player reserves the right to continue having it.

CCYHA provides, for a nominal charge and deposit fee, the use of protective hockey equipment (pants, helmet, gloves, elbow pads, shin pads and shoulder pads) for first time skaters at the Beginner level. The CCYHA also supplies KIIJ players the use of a helmet, socks and jerseys for each season. All equipment belonging to CCYHA must be returned at a predetermined time and location immediately after the last game or practice has been accomplished. The equipment should be clean and in good shape, and which point the deposit fee will be returned. Rentals do not include neck/throat guards, supporters, socks, or mouth guards. Damaged equipment must be brought to the attention of the CCYHA Equipment Manager as soon as possible.

# **REGISTRATION PROCEDURE**

Every child who wishes to participate in the program must register annually with CCYHA and pay a fee determined by the board. A non-refundable deposit may be required each year, for each program. Deposits will not be returned if you choose to play with another organization. If you are injured playing a sport other than hockey, your deposit, or any additional ice fees will not be refunded. The CCYHA Board of Directors makes important decisions, affecting all members, based on each member's commitment of playing in CCYHA. Fees must be paid in full before you are released from CCYHA, and are allowed to participating in another youth hockey organization governed by USA Hockey.

The following rules apply to registration:

- Payment is due at the time of registration; a deposit may be required at pre-registration.
- Payment may be made by cash, check, money order or Major Credit Card (if available).
- No post-dated checks will be accepted.

If payment in full cannot be made, arrangements for payment can be made with the CCYHA President & Treasurer, with the following rules/guidelines will be applied:

- A minimum of 10% of the registration amount due must be paid at the time of registration.
- The full balance of registration must be paid by December 31.
- A promissory note detailing payment arrangements will be completed for any family not paying in full. The treasurer, president and a parent must sign this form.
- Registration not paid in full by December 31 may result in your child not being permitted to continue playing hockey in the current and future seasons.

The CCYHA will accept skaters who have not pre-registered on first come first served basis until the maximum number of players at each level has been reached. New skaters registering after this point will not be guaranteed a spot.

## **SCHOLARSHIPS**

Scholarships are available for families who are unable to make full payment. Interested families should contact the Chautauqua County Community Foundation and ask about the CCYHA "Help Kids Play Hockey Fund". The Board will consider other hardship requests on a case-by-case basis. Forms for scholarships are available on the CCYHA website and can be turned in to the President. All scholarship requests are kept confidential.

## **FUNDRAISING**

Association fundraisers may be conducted throughout the season. Every family is required to actively participate in any such fundraiser. If any team chooses to engage in any type of fundraising (for tournaments, end of season banquets, etc.) the CCYHA Board of Directors must preapprove any such activities.

Team requests to fundraise, including holding tag-days, must be submitted to the Board of Directors in writing and will be considered by the Board at the next regularly scheduled Board Meeting.

# **TOURNAMENTS**

Registration fees for tournaments will be paid up-front by the CCYHA and must be reimbursed by the team within a reasonable amount of time. Tournaments can be paid through sponsorship, or by team families.

CCYHA anticipates each year to hold at least one if not more CCYHA sponsored tournaments. ALL travel members of the CCYHA are required to work during the tournament. All CCYHA teams are required to participate in the tournament(s). This is the major fundraising event for the association, and it's success each season reflects in the next seasons ice fees. Anyone wishing to volunteer to help with the organization or execution of the tournament should contact the Tournament Director.

## **RETURNED CHECKS**

Checks returned to CCYHA for any reason will be assessed a \$50 charge. If a family bounces 3 or more checks, the CCYHA will only accept cash or money order.

# TEAM VOLUNTEERS

## Team Managers:

The team manager is a key resource for your team and a large help to the coach. While the exact duties vary from team to team the manager usually has the following responsibilities:

- Advise team members and Ice coordinator in the event of a schedule change
- Make sure the team paperwork (birth certificates, team roster, medical consent to treat forms, schedules, etc.) are up to date and complete.
- Coordinate traveling arrangements for games and tournaments.
- Is the focal point for general communications to the team for Board of Directors. ● Score sheets

**Minor Officials:** Each team is responsible for providing a Scorekeeper, Timekeeper, and Penalty Box Official at their "home" games. These are relatively easy tasks to perform once you become familiar with the procedure. These responsibilities also offer a new perspective to the game. Off-ice officials are required to follow all instructions given by the on-ice officials before, during, and after games.

## Coaches:

Coaches shall follow the **USA Hockey Zero Tolerance Policy**, including the following:

CCYHA coaches come from a variety of backgrounds, but all share two important characteristics; they are ALL volunteers and they all care deeply about the development of all of the players on the teams they are coaching. Our coaches require the support of the parents of the players they are coaching. Prospective coaches can apply for coaching positions each season. Prospective coaches may be asked to interview with the CCYHA Coaches Coordinator, CCYHA Board or with a Selection Committee prior to being appointed.

Selection criterion for becoming a coach may become more rigorous as the age division and level of competition of the players increases. Initiation coaches, for example, must be able to effectively communicate with, and possess skating skills more advanced than the skaters. They also should have a rudimentary knowledge of the game of hockey. As players develop, it becomes increasingly important for coaches to be sufficiently skilled to be able to develop the skills of the most advanced player on a team. Coaches must also possess a thorough knowledge of the rules and strategies of the game. **All on-ice coaches** must obtain the USA Hockey certification appropriate to the level at which they are coaching. USA Hockey provides training and certification to individuals who wish to coach through their Coaching Achievement Program. Certification at the Associate Level or above must be obtained before December 31 for the WNYAHL. CCYHA has made it a policy to reimburse registration fees for the clinics to anyone receiving certification. If you have an interest in coaching or assistant coaching, please contact the CCYHA Coaches Coordinator.

CCYHA coaches are also expected to set positive role models of behavior for their players by adhering to the same rules of conduct as those outlined for parents above. At no time is a CCYHA coach to permit a player not registered with USA Hockey and CCYHA to participate in a CCYHA practice or game. Such conduct may result in an immediate suspension from coaching duties until a Board hearing is held on the matter. Further penalties may be assessed at that time. Older players or guest skaters may attend practice for instructional purposes only and by invitation only. These players must be approved by the Coaches Coordinator.

# **PLAYER RULES & CONDUCT**

These rules are established to provide procedures and guidelines for dealing with any situation that may detract from the goals and intent of the program, player enjoyment, program development, or the positive relationship CCYHA enjoys with the community at large, as well as host communities. All players are expected to show respect and consideration for each other, the coaches, parents, and facilities both at home and on the road. This expectation also extends to the players, coaches, parents, and facilities of opposing teams.

## ***Punctuality & Attendance:***

Players should arrive at games and practices in sufficient time to allow for suiting up and the necessary pre-game/practice instruction/ and/or warm up. Players should arrive at a practice or game in time to be completely ready to "take the ice" 10 minutes before the scheduled commencement time. The coach may have his own rule about punctuality, which would take priority.

That teams coach will decide the consequences of missing a practice or game as well as violating team rules. Head Coaches reserve the right to "bench" players when appropriate and should consult with the Coaches Coordinator under such circumstances.

Whenever possible, please notify your coach in advance of an expected absence from a practice or game. For younger players, notification of the coach should be the responsibility of the parent/guardian, whereas older players should be accountable for this responsibility.

## ***Conduct:***

It is expected that a player conduct him/herself in a polite, cooperative and attentive manner while on and off the ice. Foul language and direct insubordination during any CCYHA event is absolutely unacceptable and will be dealt with accordingly. Coaches and their appointees have the right to discipline any behavior not conducive to the goals and philosophy of CCYHA. Repeated incidences of misconduct (on or off the ice) will be reviewed by the Board, and appropriate disciplinary action will be recommended after consultation with the coach and involved player parents.

Parents should discuss any disagreements or complaints their child may have directly with the coach. If for any reason the conflict cannot be resolved in this manner, the Coaching Director and/or the Board of Directors is available to facilitate resolution. Players are to follow the **USA Hockey Zero Tolerance Policy**, including the following:

A minor penalty for unsportsmanlike conduct (Zero Tolerance) shall be assessed whenever a player:

- Openly disputes or argues any decision by an official.
- Uses obscene or vulgar language at any time, including any swearing, even if it is not directed at a particular person.
- Visually demonstrates any sign of dissatisfaction with an official's decision. Any time that a player persists in any of these actions, they may be assessed a misconduct penalty. A game misconduct shall result if the player continues such action.

Any player found to be under the influence of alcohol/illegal drugs at CCYHA sanctioned activities will be immediately suspended from all CCYHA sanctioned activities until a Disciplinary hearing can be held.

## **PARENT CONDUCT**

The same rules of conduct that apply to players also apply to parents. Negative behavior at host rinks reflects upon all teams and parents of CCYHA. Parents are expected to present a respectful and positive attitude when attending home and away game and during any league meetings or functions.

The following behaviors are NOT considered positive by the CCYHA:

- Yelling at, threatening, or booing opposing players, coaches, or referees at any time.
  - Direct confrontations with parents or players from opposing teams.
  - Demonstrations of frustration or anger after a game loss.
  - Exaggerated celebration of a goal scored or a game won that would embarrass or demean the opposing team.
  - Any physical abuse of any other person. \*\*Any physical altercation between coaches, parents, or players will result in being removed from participation in any CCYHA sanctioned events until a Disciplinary Hearing is held, within 14 days of alleged incident. The CCYHA reserves the right to remove ANY member from the organization upon a disciplinary hearing and review by the CCYHA Board of Directors.
  - Brooding about, blaming of, or criticizing players, coaches, referees, for either a positive or negative result of a call, a play, or a game.
  - Yelling at your own children (coaching from the sidelines).
- Abusive, Harassing, Slanderous or intimidating behavior directed at any Association member including members of the Board of Directors, parents, players, coaches, managers or other Association volunteers.

Parents are to follow the **USA Hockey Zero Tolerance Policy**, including the following: The game will be stopped by on-ice officials when Parents/Spectators displaying inappropriate and disruptive behavior interfere with other spectators or the game. The on-ice officials will identify violators to the coaches for the purpose of removing Parents/Spectators from the spectators viewing and game area. Once removed, play will resume. Lost time will not be replaced and violators may be subject to further disciplinary action by the local governing body, which could include forfeit of the game played by Parents/spectators team. This inappropriate and disruptive behavior shall include, but is not limited to:

- Use of obscene or vulgar language in a boisterous manner to anyone at any time.
- Taunting of players, coaches, officials, or other spectators by means of baiting, ridiculing, threat of physical violence of physical violence.
- Throwing of any object in the spectators viewing area, player's bench, penalty box or on the ice surface, directed in any manner as to create a safety hazard.

To All Association Members: Coaches, Managers, League Administrators, and Members of the Board of Directors are all volunteers. Volunteers are necessary for the sustenance of this Association. Parents shall at all times treat all such individuals with dignity, courtesy and respect. Showing Appreciation to these individuals for the endless hours of volunteer commitment to the Association is highly encouraged!!!

## **ADDITIONAL RULES**

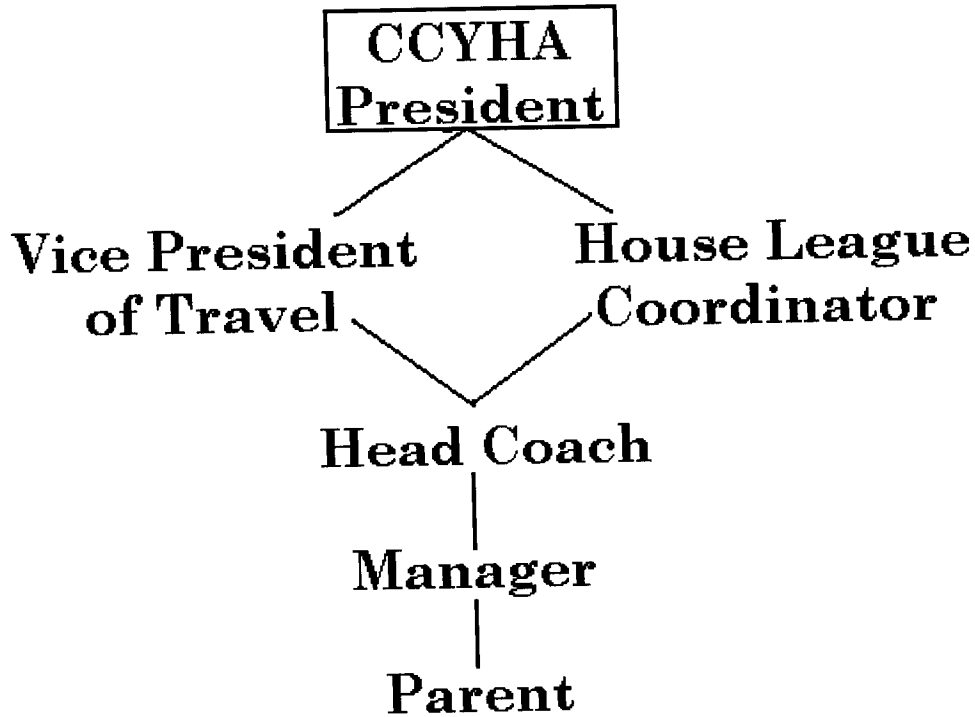
**Anyone physically/verbally abusing an official, coach, assistant coach, parent helper or spectator shall be immediately suspended from attendance or participation in any CCYHA sponsored event for the , subject to a hearing before the Disciplinary Committee as set forth in the by-laws. Regular problems are to be reported to the CCYHA Board of Directors.**

CCYHA will adhere to all USA Hockey, NYSAHA, and league rules with respect to minor and major penalties.

A deliberate attempt to injure another player will result in immediate expulsion from the game or practice. The incident must then be reviewed within 10 days by the Coaching Director and the Disciplinary Committee. The offender will not be allowed to participate in practice or games until a hearing has been held by the Disciplinary Committee and a decision rendered thereby. This process is consistent with the policies of USA Hockey.

# **GRIEVANCE PROCEDURE**

The Chautauqua County Youth Hockey Association's Board of Directors indicates the below method for general Grievance Procedures in the organization.



Any parent or guardian of a CCYHA participant or any other Association member with a concern regarding a Player, Coach, Parent or other Association member shall first address their concern to the Manager of the team their child is playing for. If the issue involves the Manager of the team they may address the concern directly with the Coach. If the Matter is not resolved, the Manager and/or Coach shall present the issue to the Vice President of Travel if the issue involves a player, parent, manager or coach of a travel team or to the House League Coordinator if the issue involves a player, parent, Manager or coach of a house team. If the Matter is not resolved the Vice President of Travel or the House League Coordinator shall refer the matter to the Disciplinary Committee for Review.